

Customer :

customer

Customer part :

customer part

Comment :

Comment

S1=0.05

S2=0.77

Tmax=601

Tp S2=640.0

PI=0.06

HI=9

Sample =2928.0

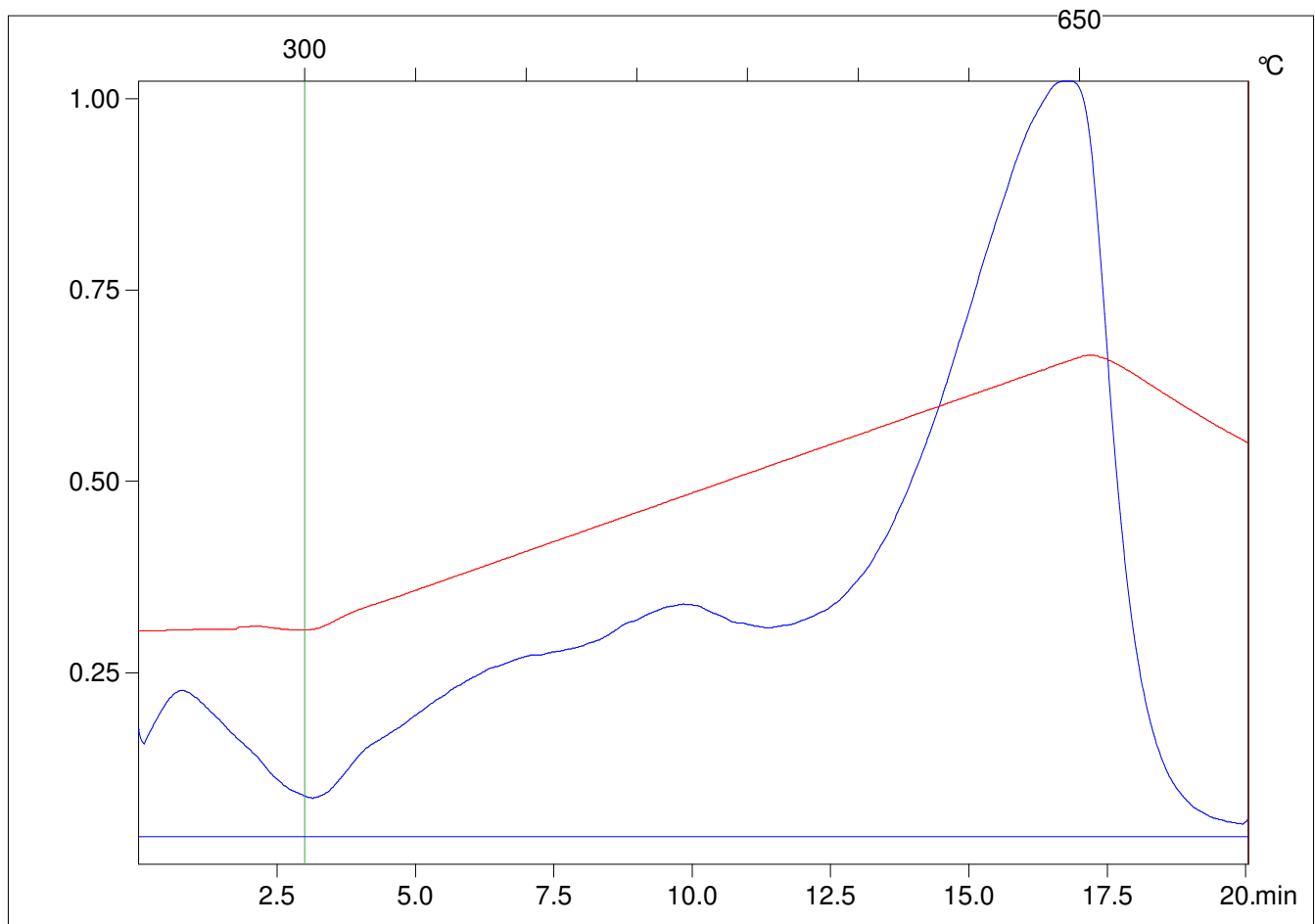
Method =Bulk Rock

Cycle=Basic

KFID(10*9)=1550

Qty =70.2

TOC=8.9



C:\VINC\PK130315\PK027.R00 : FID pyrolysis graphic

State

Pyro Status

Oxi Status